


**INTRODUCTION TO
BLUEPRINT READING**

▶ INSTITUTE FOR FACILITIES MANAGEMENT
▶ NASHVILLE, TN



AIA Continuing Education Provider

▶ FACULTY: SADIE GREINER, PE, LEED AP
▶ DIRECTOR, DESIGN & CONSTRUCTION
▶ UNIVERSITY OF IOWA

AIA Credits

Credit(s) earned on completion of this course will be reported to American Institute of Architects (AIA) Continuing Education Session (CES) for AIA members.

Certificates of Completion for both AIA members and non-AIA members are available upon request.

This course is registered with AIA CES for continuing professional education. As such, it does not include content that may be deemed or construed to be an approval or endorsement by the AIA of any material of construction or any method or manner of handling, using, distributing, or dealing in any material or product.

Questions related to specific materials, methods, and services will be addressed at the conclusion of this presentation.

AIA Continuing Education Provider

CORE DESCRIPTION

561 Introduction to Blueprint Reading APPAU201909

This hands-on fundamentals course is designed for individuals in facilities administration and operations who are responsible for reviewing design drawings for campus projects. Learn the techniques for reviewing and interpreting plans and elevations by envisioning three-dimensional space from a two-dimension representation. Review how architectural and engineering drawings, better known as “blueprints”, once reproduced for review, are structured, layered, detailed, cross-referenced and more.

Faculty: Sadie Greiner

AIA Continuing Education Provider

LEARNING OBJECTIVES

1. Discuss the responsibilities for reviewing design drawings for campus project.
2. Learn the techniques for reviewing and interpreting plans by envisioning three-dimensional space from a two-dimension representation.
3. Review architectural and engineering drawings, are structured, layered, and more
4. Review how blue prints are cross referenced.

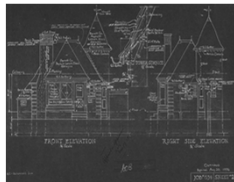
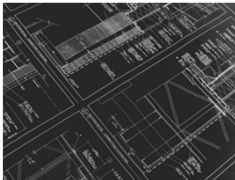
AIA
Continuing
Education
Provider

PRESENTATION OUTLINE

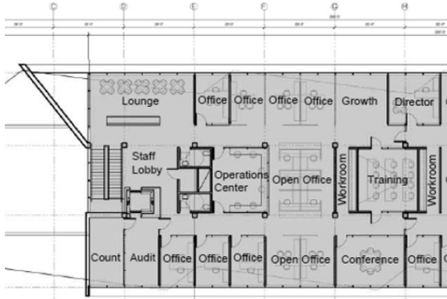
- ▶ DRAWINGS
 - ▶ COVER SHEET
 - ▶ SITE PLANS
 - ▶ ARCHITECTURAL PLANS
 - ▶ ENGINEERING DRAWINGS
 - ▶ DETAILS / SECTIONS / SCHEDULES
- ▶ SPECIFICATIONS
 - ▶ 50 DIVISIONS
- ▶ ADDENDA
- ▶ SUPPLEMENTAL INSTRUCTIONS



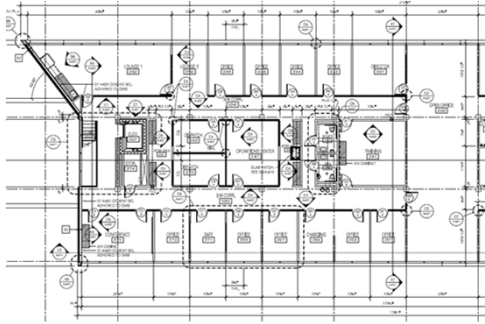
WHY ARE DRAWINGS CALLED BLUEPRINTS?



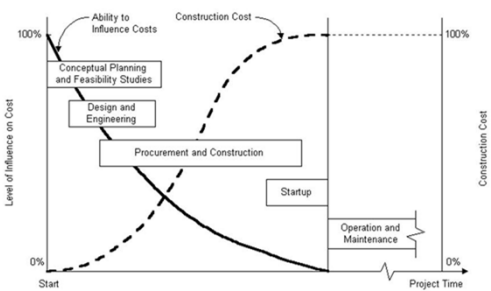
DRAWING PHASES - SCHEMATIC DESIGN



CONSTRUCTION DOCUMENT PHASE



Design Cost vs Construction Cost and Project Time



COVER SHEET
 PROJECT TITLE, ARCHITECT/ENGINEER NAME(S), CONTACT INFORMATION,
 PROJECT LOCATION MAP, DATE (ISSUED/ BID) AND INDEX OF PLAN SHEETS.

**THE UNIVERSITY OF IOWA
 WEST CAMPUS TRANSPORTATION CENTER**
 UI PROJECT No. 0327601

ARCHITECT
 HOK

**UNIVERSITY OF IOWA
 WEST CAMPUS TRANSPORTATION CENTER**

DATE
 08/30/2019

PROJECT LOCATION MAP

INDEX OF SHEETS

GENERAL NOTES

APPENDIX

G-001

**UNIVERSITY OF IOWA
 FIELD HOUSE - MODIFY
 FOR UIHC ENTRY ACCESS**

**THE UNIVERSITY OF IOWA
 IOWA CITY, IOWA
 U.I. PROJECT NO. 0399101**

GENERAL NOTES

SHEET INDEX

PROJECT LOCATION

North Arrow

Library Learning Commons
 Renovate First Floor
 University of Iowa
 125 West Washington Street
 Iowa City, IA 52242

U of I # 0318602
 U of I # 0402101 Library - Food Service Equipment

LEWIS MITZGER

BID SET
 Issue Date: 06.04.2012

Library Learning Commons - Renovate First Floor

GENERAL PROJECT NOTES

DESIGN TEAM

SHEET INDEX

LOCATION MAP

ABBREVIATIONS

ABBREVIATIONS AND LEGENDS

AS IF THERE AREN'T ENOUGH ACRONYMS IN THIS WORLD...SEEK OUT THE LEGENDS AND ABBREVIATION TABLES.

TABLE OF CONTENTS INDEX OF DRAWINGS

GENERAL		ARCHITECTURAL DRAWINGS	
G-001 COVER SHEET		A-001 GENERAL ARCHITECTURAL INFORMATION	
G-101 FIRST LEVEL LIFE SAFETY PLAN		A-101 FIRST LEVEL FLOOR PLAN	
G-101.1 MEZZANINE LEVEL LIFE SAFETY PLAN		A-101.1 MEZZANINE LEVEL FLOOR PLAN	
G-102 SECOND LEVEL LIFE SAFETY PLAN		A-102 SECOND LEVEL FLOOR PLAN	
G-102.1 SKYWALK LIFE SAFETY PLAN - WEST		A-102.1 SKYWALK FLOOR PLAN - WEST	
G-102.2 SKYWALK LIFE SAFETY PLAN - EAST		A-102.2 SKYWALK FLOOR PLAN - EAST	
CIVIL DRAWINGS		A-111 FIRST LEVEL REFLECTED CEILING PLAN	
C0-01 EXISTING SITE CONDITIONS		A-111.1 REFLECTED CEILING PLAN AT UNDERSIDE OF SKYWALK - WEST	
C0-02 EXISTING SITE CONDITIONS		A-111.2 REFLECTED CEILING PLAN AT UNDERSIDE OF SKYWALK - EAST	
C1-01 STORMWATER POLLUTION PREVENTION PLAN		A-112 SECOND LEVEL REFLECTED CEILING PLAN	
C1-02 STORMWATER POLLUTION PREVENTION PLAN		A-112.1 SKYWALK REFLECTED CEILING PLAN - WEST	
C1-03 STORMWATER POLLUTION PREVENTION PLAN		A-112.2 SKYWALK REFLECTED CEILING PLAN - EAST	
C1-04 STORMWATER POLLUTION PREVENTION PLAN		A-121 ROOF PLAN	
C1-05 STORMWATER POLLUTION PREVENTION PLAN		A-121.1 SKYWALK ROOF PLAN - WEST	
C2-00 CONSTRUCTION PHASING AND TRAFFIC PLAN		A-121.2 SKYWALK ROOF PLAN - EAST	
C2-01 CONSTRUCTION PHASING AND TRAFFIC PLAN		A-201 EXTERIOR ELEVATIONS	
C2-02 CONSTRUCTION PHASING AND TRAFFIC PLAN		A-202 EXTERIOR ELEVATIONS	
C2-03 CONSTRUCTION PHASING AND TRAFFIC PLAN		A-204 EXTERIOR ELEVATIONS	
C2-04 CONSTRUCTION PHASING AND TRAFFIC PLAN		A-211 BUILDING SECTIONS	
C2-05 CONSTRUCTION PHASING AND TRAFFIC PLAN		A-301 WALL SECTIONS	
C2-06 CONSTRUCTION PHASING AND TRAFFIC PLAN		A-302 WALL SECTIONS	
C2-08 CARBON PHASING		A-303 WALL SECTIONS	
C2-09 CARBON PHASING		A-304 WALL SECTIONS	
C2-09 LONG SPAN BEAM INSTALLATION PHASING		A-401 INTERIOR ELEVATIONS	
C2-10 FRAMING INSTALLATION/ERECTING PHASING		A-402 INTERIOR ELEVATIONS	
C2-11 CONSTRUCTION PHASING TEMPORARY TRAFFIC SIGNAL		A-403 INTERIOR ELEVATIONS	
C2-12 AREA PHASING DIAGRAMS		A-411 ENLARGED FLOOR PLANS	
C2-13 AREA PHASING DIAGRAMS		A-412 ENLARGED FLOOR PLANS	
C3-01 SITE PREPARATION AND DEMOLITION PLAN		A-501 PLAN DETAILS	
C4-01 UTILITY PLAN		A-502 PLAN DETAILS	
C4-02 UTILITY PLAN		A-506 SECTION DETAILS	
C4-11 UTILITY PROFILES		A-508 SECTION DETAILS	
C4-12 UTILITY PROFILES		A-507 SECTION DETAILS	
Q6-01 UTILITY DETAILS		A-508 SECTION DETAILS	
Q6-02 UTILITY DETAILS		A-509 SECTION DETAILS	



TABLE OF CONTENTS SHEET INDEX

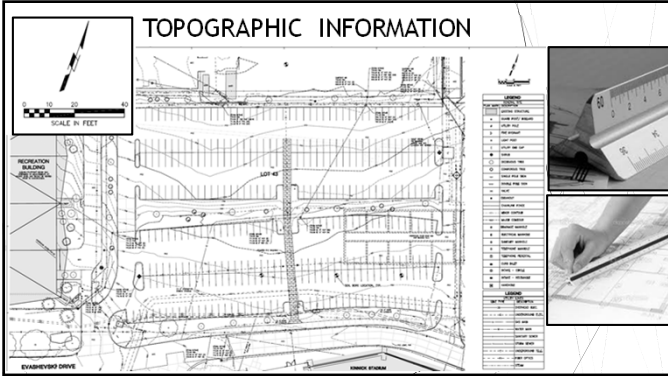
I100A COVER		M0100A BASEMENT PIPING DEMO PLAN	
I101A CODE PLAN		M0100A FOURTH FLOOR PIPING DEMO PLAN	
A000A DEMOLITION FLOOR PLAN		M0105A FIFTH FLOOR PIPING DEMO PLAN	
A101A FLOOR PLAN		M0200A FIFTH FLOOR HVAC DEMO PLAN	
A102A REFLECTED CEILING PLAN		M100A BASEMENT PIPING PLAN	
A103A FINISH PLAN		M101A FIRST AND SECOND FLOOR FLOOR PIPING PLANS	
A104A FURNITURE PLAN		M104A FOURTH FLOOR PIPING PLAN	
A105A FIRST FLOOR CIRCULATION DEPARTMENT		M105A FIFTH FLOOR PIPING PLAN	
A106A FLOOR PLANS - B, 1, 2, 3, 4		M200A FIFTH FLOOR & ROOF HVAC PLANS	
A107A ENLARGED PLANS		M501A MECHANICAL DETAILS	
A401A INTERIOR ELEVATIONS		M502A MECHANICAL DETAILS	
A501A DETAILS AND CASEWORK		M601A AIR FLOW SCHEMATIC	
A502A CASEWORK GROUPS (CWG)		M602A MECHANICAL SCHEDULES	
A601A DOOR SCHEDULE & TYPES		M701A MECHANICAL CONTROL SEQUENCES	
		M702A MECHANICAL CONTROL SEQUENCES	
S301A PARTIAL ROOF FRAMING PLAN		E001A ELECTRICAL SYMBOL SCHEDULE	
M001A MECHANICAL SYMBOLS AND ABBREVIATIONS		EDL100A FIFTH FLOOR LIGHTING DEMOLITION PLAN	
PD100A THIRD & FIFTH FLOOR PLUMBING DEMO PLANS		ED105A FIFTH FLOOR ELECTRICAL DEMOLITION PLAN	
P100A BASEMENT PLUMBING PLAN AND FIXTURE SCHEDULE		E101A FIRST FLOOR SUITE 101 ELECTRICAL PLANS	
P104A FOURTH FLOOR PLUMBING PLAN		EL100A FIFTH FLOOR LIGHTING PLAN	
P105A FIFTH FLOOR PLUMBING PLAN		EP100A BASEMENT OVERALL ELECTRICAL PLAN	
P601A PLUMBING RISERS		EP105A FIFTH FLOOR POWER AND SYSTEMS PLAN	
P602A PLUMBING RISERS		ET100A FIFTH FLOOR TECHNOLOGY PLAN	
F105A FIFTH FLOOR FIRE PROTECTION		E200A ELECTRICAL SCHEDULES AND DETAILS	
		E201A ELECTRICAL 200V ONE-LINE DIAGRAM	

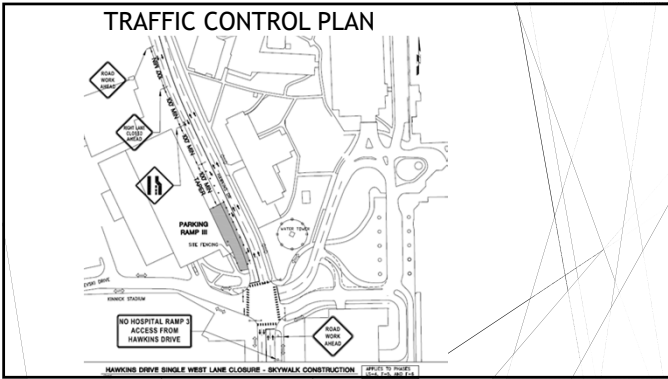


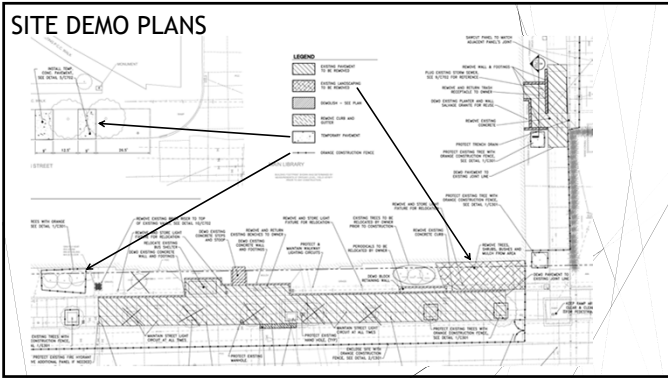
SITE DRAWINGS

TYPICALLY "C" SHEETS AND INCLUDE TOPOGRAPHICAL INFORMATION, SOIL BORINGS, SITE DEMOLITION, SITE UTILITY PLANS AND BMP PLANS.

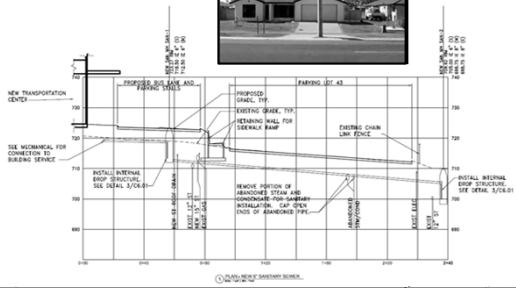








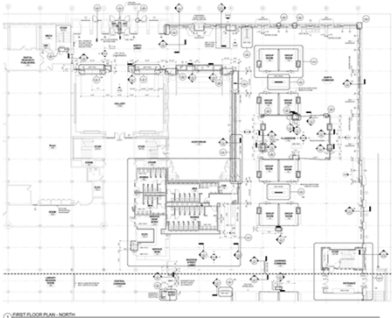
UTILITY PLANS



ARCHITECTURAL DRAWINGS

TYPICALLY "A" SHEETS AND INCLUE FLOOR PLANS, ELEVATIONS, DETAILS, SCHEDULES AND SECTIONS.

ARCHITECTURAL FLOOR PLANS



MARKERS

CLASSICAL TITLE NUMBER

DRAWING NUMBER

1 DRAWING TITLE

SCALE

SECTION NUMBER

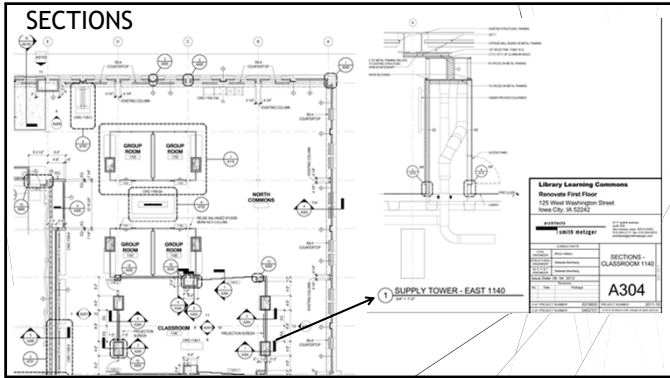
SECTION NUMBER

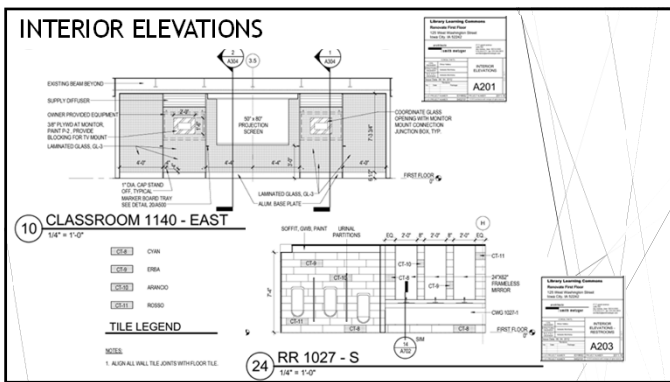
SHEET WHERE SHOWN

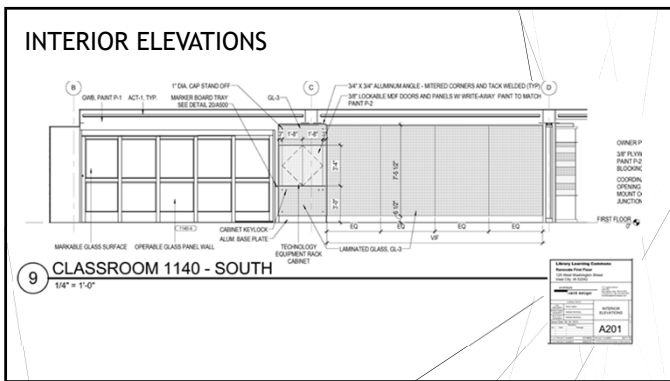
SECTION LINE

SECTION LINE

SECTION LINE







SECTIONS / DETAILS

14 CWG 1027-1 SECTION
1" = 1'-0"

Library Learning Commons	
Remodeled First Floor 125 West Washington Street West City, IL 60604	
ARCHITECT	DATE
GROUP	DESCRIPTION
GROUP	GROUP DETAILS
A702	

REFLECTED CEILING PLANS

GENERAL NOTES:

1. ALL REFLECTED CEILING IN PROJECT SHALL BE ACT-1 @ 8" R.A.F.F. UNLESS NOTED OTHERWISE.
2. OFFSET ACUSTIC CEILING 2" FROM STRUCTURAL ELEMENTS AND WALLS UNLESS NOTED OTHERWISE.
3. SEE ROOMS 1152 & 1153 FOR TYPICAL CEILING DIMENSIONS AT GROUP STUDY ROOMS.
4. SEE SHEETS A110 AND A111 FOR FINISH INFORMATION.

KEY PLAN

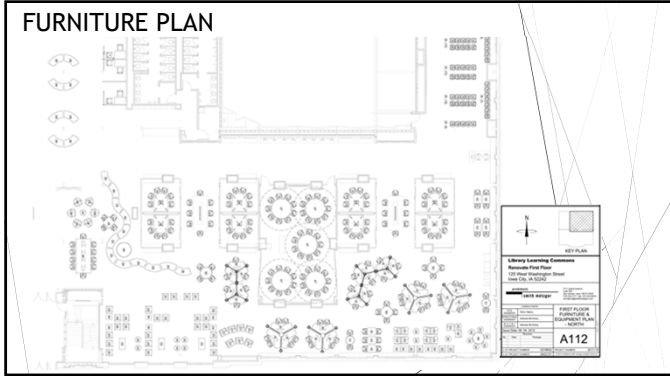
Library Learning Commons	
Remodeled First Floor 125 West Washington Street West City, IL 60604	
ARCHITECT	DATE
GROUP	DESCRIPTION
GROUP	FIRST FLOOR REFLECTED CEILING PLAN - NORTH
A106	

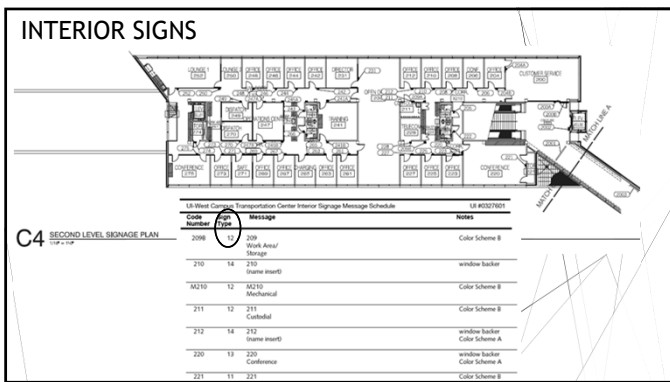
ARCHITECTURAL DETAILS

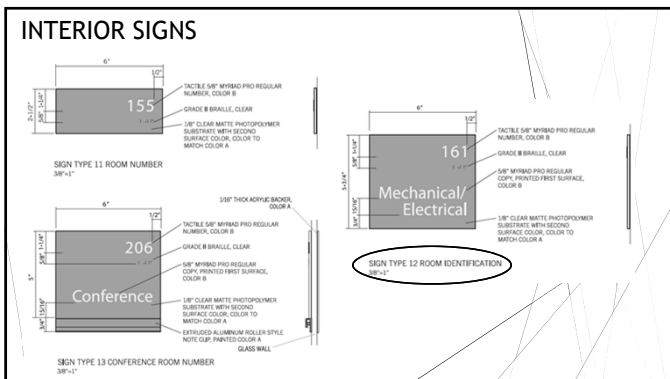
17 DETAIL - TYP. ACT CEILING
1 1/2" = 1'-0"

5 DETAIL - TYP. BASE
3" = 1'-0"

3 DETAIL AT 1948 PILASTER
6" = 1'-0"







ENGINEERING DRAWINGS

TYPICALLY M-E-P or M-E-P-T SHEETS

MECHANICAL, PLUMBING, FIRE SUPPRESSION, HEATING, VENTILATION & AIR
CONDITIONING, ELECTRICAL, TELECOM AND AUDIO/VISUAL



ENGINEERING DRAWINGS - ABBREVIATIONS AND LEGENDS

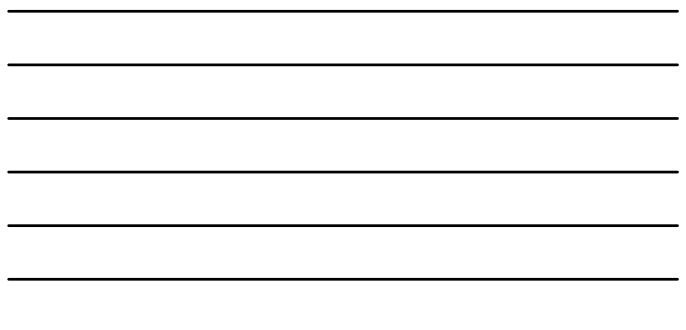
PIPELINE SYMBOLS		ABBREVIATIONS	
PIPE LINE SYMBOL	SERVICE	ABBREVIATION	DESCRIPTION
CA	COMPRESSED AIR	DSH	DOWN SPOUT NOZZLE
RA	REFRESHMENT AIR	DF	DOWN FLOOR
FOR	FUEL OIL RETURN	DB	DRY BALL
FBS	FUEL OIL SUPPLY	ELEC	ELECTRICAL
FVW	FUEL OIL VENT	EC	ELECTRICAL CONTRACTOR
BFW	BOILER FEED WATER	ERC	ELECTRIC WATER COOLER
CWS	CHILLED WATER SUPPLY	EL	ELEVATION
CWR	CHILLED WATER RETURN	EAT	ENTERING AIR TEMPERATURE
RL	REFRIGERANT LIQUID	EXT	EXITING AIR TEMPERATURE
RS	REFRIGERANT SUCTON	EQIP	EQUIPMENT
RHG	REFRIGERANT HOT GAS	EF	EXHAUST FAN
CTWS	COOLING TOWER SUPPLY	FT	FITTING
CTWR	COOLING TOWER RETURN	FSM	FEET PER MINUTE
HWS	HEATING WATER SUPPLY	FPS	FEET PER SECOND
HWR	HEATING WATER RETURN	FE	FIRE EXTINGUISHER
LPS	LOW PRESSURE STEAM (0-15 PSIG)	FH	FIRE HOIST
LPC	LOW PRESSURE CONDENSATE	FL	FLEASHE
MPS	MEDIUM PRESSURE STEAM (16-150 PSIG)	FAT	FAN & THERMOSTATIC
MPC	MEDIUM PRESSURE CONDENSATE	FL	FLOOR
HPS	HIGH PRESSURE STEAM (16-150 PSIG)	FG	FUEL OIL FILL
HPC	HIGH PRESSURE CONDENSATE	FGG	FUEL OIL GAUGE
GLT	GLYCOL	GPH	GALLONS PER HOUR
COND	CONDENSATE	GPM	GALLONS PER MINUTE
PC	PUMPED CONDENSATE	GALV	GALVANIZED
CW	COOL WATER	GA	GASKET
HV	HOT WATER	GEN	GENERAL
HW	HEATING HOT WATER	GC	GENERAL CONTRACTOR

**HERESTA
BLOMBERG**

125 WEST WASHINGTON STREET
IOWA CITY, IA 52242

Library Learning Commons

M001



ENGINEERING DRAWINGS - DEMOLITION

DEMOLITION GENERAL NOTES:

- INDICATED AREA DESIGNATED FOR DEMOLITION. ALL MECHANICAL AND ELECTRICAL WORK IN THIS AREA SHALL BE DEMOLISHED.
- DEMOLITION OF COMBINATION LIGHT/EXHAUSTER SHALL BE THE RESPONSIBILITY OF THE CONTRACTOR. THE CONTRACTOR SHALL BE RESPONSIBLE FOR DISCONNECTING TO THE FUTURE ONE.
- ALL WORK IS TO BE DONE IN READY AND WORKMANLIKE MANNER USING ACCEPTABLE TRADE PRACTICES AND PROCEDURES.
- MECHANICAL CONTRACTOR SHALL REMOVE & SITE ALL MECHANICAL EQUIPMENT AND MATERIALS IN ACCORDANCE WITH THE SPECIFICATIONS AND THE CONTRACT DOCUMENTS. THE CONTRACTOR SHALL BE RESPONSIBLE FOR THE REMOVAL OF ALL MECHANICAL EQUIPMENT AND MATERIALS IN THE AREA INDICATED ON THE PLANS.
- SCOPE OF WORK SHALL BE COMPLETED IN A FULLY COMPLIANT AND OPERATIONAL MANNER. ALL EXISTING MECHANICAL EQUIPMENT SHALL BE REMOVED AND NOT RE-INSTALLED. THE CONTRACTOR SHALL BE RESPONSIBLE FOR THE REMOVAL OF ALL MECHANICAL EQUIPMENT AND MATERIALS IN THE AREA INDICATED ON THE PLANS.

KEY NOTES:

- INDICATED AREAS TO BE DEMOLISHED PLUMBING FEATURES.
- INDICATED AREAS TO BE DEMOLISHED PLUMBING FEATURES AND EQUIPMENT.
- INDICATED AREAS TO BE DEMOLISHED PLUMBING FEATURES.
- INDICATED AREAS TO BE DEMOLISHED PLUMBING FEATURES.
- INDICATED AREAS TO BE DEMOLISHED PLUMBING FEATURES.
- INDICATED AREAS TO BE DEMOLISHED PLUMBING FEATURES.
- INDICATED AREAS TO BE DEMOLISHED PLUMBING FEATURES.

**HERESTA
BLOMBERG**

125 WEST WASHINGTON STREET
IOWA CITY, IA 52242

Library Learning Commons

Basement

PLUMBING

PD100



ENGINEERING DRAWINGS - DEMOLITION CONT'D

DEMOLITION GENERAL NOTES:

1. HATCHED AREAS INDICATE THE AREAS TO BE DEMOLISHED. ALL DEMOLITION SHALL BE ACCORDING TO THE CITY OF SEASIDE DEMOLITION ORDINANCE.
2. ALL WORK SHALL BE DONE IN ACCORDANCE WITH THE CITY OF SEASIDE DEMOLITION ORDINANCE AND THE CALIFORNIA DEMOLITION ACT.
3. ALL WORK SHALL BE DONE IN ACCORDANCE WITH THE CITY OF SEASIDE DEMOLITION ORDINANCE AND THE CALIFORNIA DEMOLITION ACT.
4. ALL WORK SHALL BE DONE IN ACCORDANCE WITH THE CITY OF SEASIDE DEMOLITION ORDINANCE AND THE CALIFORNIA DEMOLITION ACT.
5. ALL WORK SHALL BE DONE IN ACCORDANCE WITH THE CITY OF SEASIDE DEMOLITION ORDINANCE AND THE CALIFORNIA DEMOLITION ACT.
6. ALL WORK SHALL BE DONE IN ACCORDANCE WITH THE CITY OF SEASIDE DEMOLITION ORDINANCE AND THE CALIFORNIA DEMOLITION ACT.
7. ALL WORK SHALL BE DONE IN ACCORDANCE WITH THE CITY OF SEASIDE DEMOLITION ORDINANCE AND THE CALIFORNIA DEMOLITION ACT.
8. ALL WORK SHALL BE DONE IN ACCORDANCE WITH THE CITY OF SEASIDE DEMOLITION ORDINANCE AND THE CALIFORNIA DEMOLITION ACT.
9. ALL WORK SHALL BE DONE IN ACCORDANCE WITH THE CITY OF SEASIDE DEMOLITION ORDINANCE AND THE CALIFORNIA DEMOLITION ACT.
10. ALL WORK SHALL BE DONE IN ACCORDANCE WITH THE CITY OF SEASIDE DEMOLITION ORDINANCE AND THE CALIFORNIA DEMOLITION ACT.

KEY PLAN:

LIBERTA HLOMBERG
LIBERTA HLOMBERG ARCHITECTS
1017 1/2 STREET
SEASIDE, CALIFORNIA 92137
TEL: 760.431.1111
WWW.LIBERTAHL.COM

PROJECT: Library Learning Commons
Remodel First Floor
125 WEST WASHINGTON STREET
SEASIDE, CALIFORNIA 92137

DATE: 08/20/19

SCALE: 1/4" = 1'-0"

PROJECT NO.: PD102

ENGINEERING DRAWINGS - HVAC

PHOTOGRAPH: A photograph showing a white, rectangular ceiling-mounted HVAC diffuser in a room with a wooden floor.

CALLOUT: A detailed view of a diffuser showing a circular grille with a diameter of 80 inches. It is connected to a duct system with a flow rate of 350 CFM. The diffuser is labeled 'MH100'.

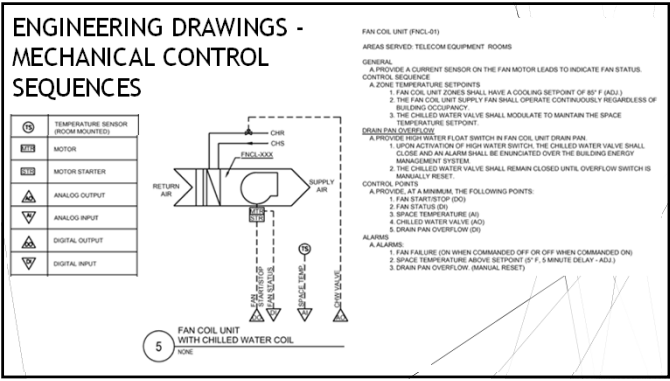
LEGEND:

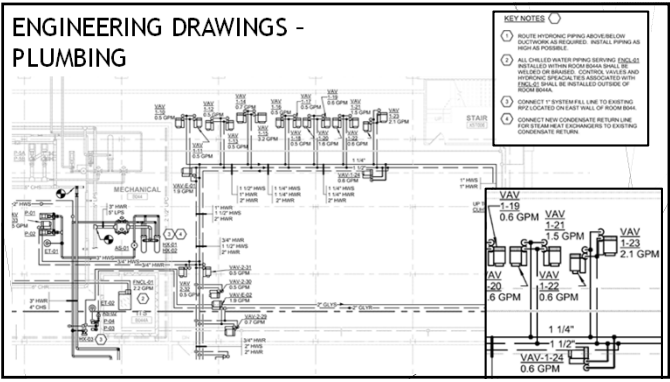
- 1. 350 CFM
- 2. 350 CFM

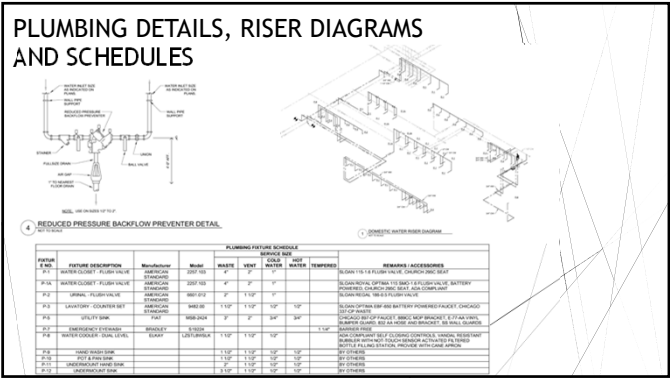
ENGINEERING DRAWINGS - HVAC - SECTIONS / DETAILS / SCHEDULES

1 AHU-01 SECTION VIEW
1/4" = 1'-0"

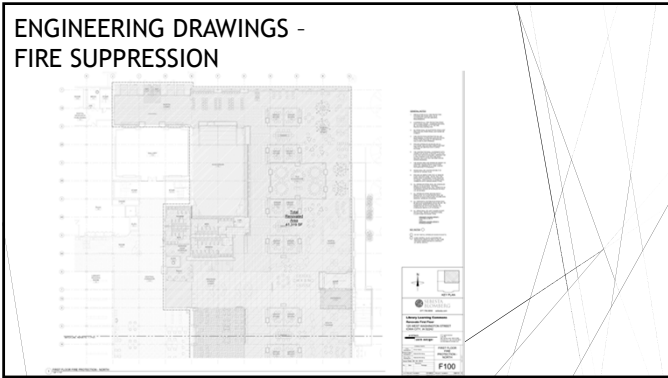
Labels in the drawing include: SOLENOID VALVE, AIR BLENDER, AIR FILTERS, PRE-HEAT COIL, COOLING COIL, SUPPLY FAN, FLEXIBLE DUCT CONNECTION (1/2" DIA), SOUND MATTED SOUND ATTENUATING DUCTWORK, and PIPE PLENUM DRAIN TO NEAREST FLOOR DRAIN.



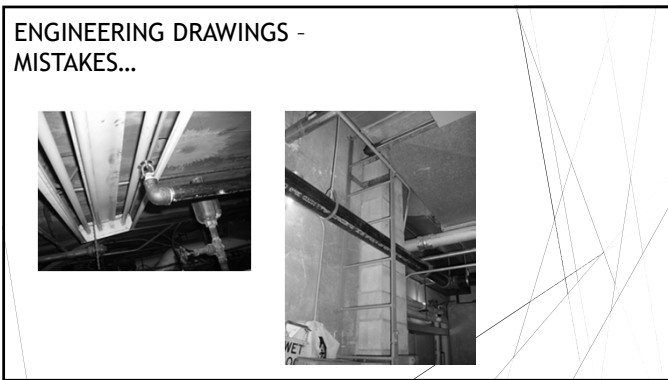




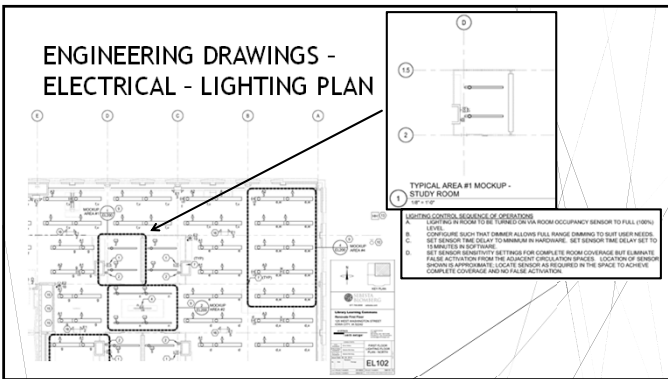
ENGINEERING DRAWINGS - FIRE SUPPRESSION

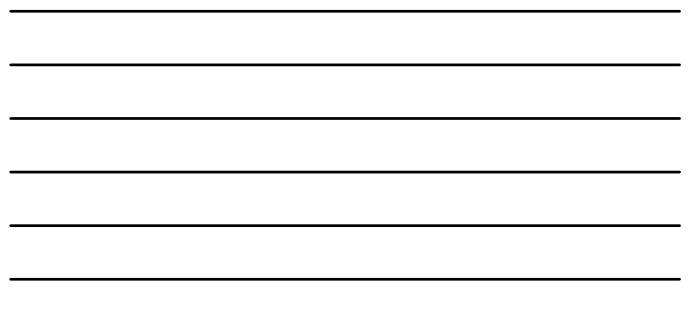
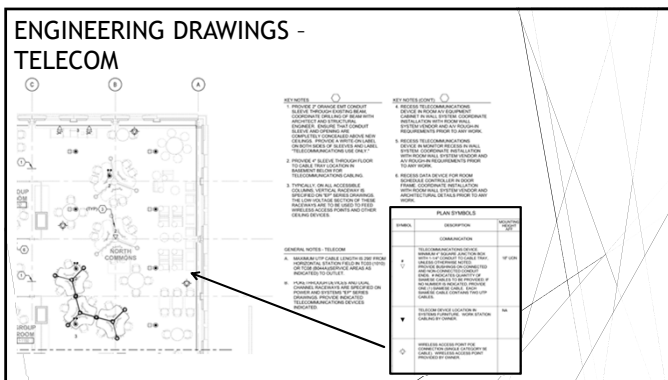
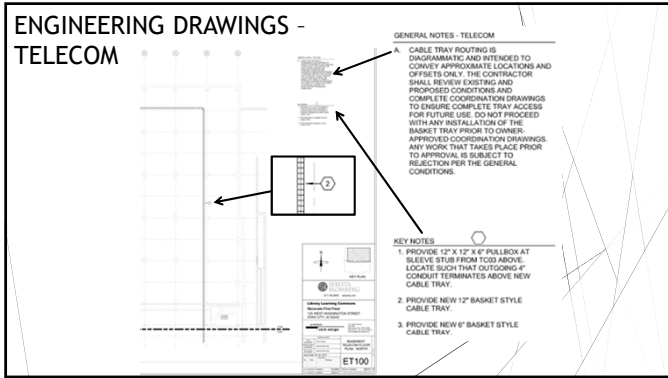


ENGINEERING DRAWINGS - MISTAKES...



ENGINEERING DRAWINGS - ELECTRICAL - LIGHTING PLAN





SPECIFICATIONS

- FACILITY SERVICES SUBGROUP
 - DIVISION 21 - FIRE SUPPRESSION
 - DIVISION 22 - PLUMBING
- FACILITY SERVICES SUBGROUP CONTINUED
 - DIVISION 23 - HEATING VENTILATING AND AIR CONDITIONING
 - DIVISION 25 - INTEGRATED AUTOMATION
 - DIVISION 26 - ELECTRICAL
 - DIVISION 27 - COMMUNICATIONS
 - DIVISION 28 - ELECTRONIC SAFETY AND SECURITY
- SITE AND INFRASTRUCTURE SUBGROUP
 - DIVISION 31 - EARTHWORK
 - DIVISION 32 - EXTERIOR IMPROVEMENTS
 - DIVISION 33 - UTILITIES
 - DIVISION 34 - TRANSPORTATION
 - DIVISION 35 - WATERWAY AND MARINE
- PROCESS EQUIPMENT SUBGROUP
 - DIVISION 40 - PROCESS INTEGRATION
 - DIVISION 41 - MATERIAL PROCESSING AND HANDLING EQUIPMENT
 - DIVISION 42 - PROCESS HEATING, COOLING AND DRYING EQUIPMENT
 - DIVISION 43 - PROCESS GAS AND LIQUID HANDLING, PURIFICATION AND STORAGE EQUIPMENT
 - DIVISION 44 - POLLUTION CONTROL EQUIPMENT
 - DIVISION 45 - INDUSTRY-SPECIFIC MANUFACTURING EQUIPMENT
 - DIVISION 48 - ELECTRICAL POWER GENERATION
- PROCUREMENT AND CONTRACTING REQUIREMENT GROUP
 - DIVISION 00 - PROCUREMENT AND CONTRACTING REQUIREMENTS
- GENERAL REQUIREMENTS SUBGROUP
 - DIVISION 01 - GENERAL REQUIREMENTS
- FACILITY CONSTRUCTION SUBGROUP
 - DIVISION 02 - EXISTING CONDITIONS
 - DIVISION 03 - CONCRETE
 - DIVISION 04 - MASONRY
 - DIVISION 05 - METALS
 - DIVISION 06 - WOOD AND PLASTICS
 - DIVISION 07 - THERMAL AND MOISTURE PROTECTION
 - DIVISION 08 - OPENINGS
 - DIVISION 09 - FINISHES
 - DIVISION 10 - SPECIALTIES
 - DIVISION 11 - EQUIPMENT
 - DIVISION 12 - FURNITURE
 - DIVISION 13 - SPECIAL CONSTRUCTION
 - DIVISION 14 - CONVEYING EQUIPMENT



SPECIFICATIONS

THE UNIVERSITY OF IOWA

PROJECT MANUAL
FOR
West Campus Transportation Center - Construct Facility
Project #02501

THE UNIVERSITY OF IOWA
IOWA CITY, IOWA

Items 1 of 2 - Divisions 1 through 14
Bidding Documents

PRE-BID CONFERENCE: 1:30pm, Central Time, 09/09/11
Room 202 - University Services Building

SITE TOUR: Immediately Following Pre-Bid Conference

BIDS DUE: 2:00pm, Central Time, 09/23/11
The University of Iowa
Planning Design & Construction
205 University Services Building
Iowa City, Iowa 52242-7022

DESIGN PROFESSIONAL: Anascan Moncor Architects
221 E. Conant Street, Suite 203
Iowa City, Iowa

The University of Iowa
West Campus Transportation Center - Construct Facility

TABLE OF CONTENTS

DIVISION 0 - PROCUREMENT AND CONTRACTING REQUIREMENTS

- 00 01 00 SEALS & SIGNATURES
- 00 01 10 TABLE OF CONTENTS
- 00 11 10 ADVERTISEMENT FOR BIDS
- 00 21 10 INSTRUCTIONS TO BIDDERS
- 00 41 10 FORM OF BID FOR CONSTRUCTION CONTRACT
- 00 43 10 BIDDING
- 00 43 20 SUBSTITUTION REQUEST FORM
- 00 43 30 SUBCONTRACTOR LIST
- 00 45 30 EEG DATA REPORTING FORM
- 00 45 37 CERTIFICATE OF REPORTING
- 00 45 40 TARGETED SMALL BUSINESS FORM
- 00 72 10 UNIFORM GENERAL CONDITIONS
- 00 73 10 SUPPLEMENTARY CONDITIONS
- 00 74 10 SPECIAL CONDITIONS

DIVISION 1 - GENERAL REQUIREMENTS

- 01 3020 SUBMITTALS
- 01 3030 INTERIM INFECTION CONTROL MEASURES
- 01 4000 QUALITY REQUIREMENTS
- 01 5220.00 TEMPORARY STORMWATER POLLUTION CONTROL
- 01 5225.10 STORMWATER POLLUTION PREVENTION PLAN CERTIFICATION
- 01 5225.20 STORMWATER POLLUTION PREVENTION PLAN
- 01 5225.30 STORMWATER POLLUTION PREVENTION PLAN CONTRACTORS/SUBCONTRACTORS IMPLEMENT MEASURES
- 01 7410 CONSTRUCTION WASTE MANAGEMENT AND OR
- 01 7710 CONTRACT CLOSEOUT
- 01 7820 OPERATION AND MAINTENANCE DATA
- 01 7830 PROJECT RECORD DOCUMENTS
- 01 9110 COMMISSIONING

DIVISION 2 - EXISTING CONDITIONS

- 02 4100 DEMOLITION
- 02 4110 SELECTIVE SITE DEMOLITION

ADDENDA

ISSUED AFTER PROJECT HAS BEEN ADVERTISED BUT BEFORE BIDS ARE RECEIVED...

ADDENDA

FIELD HOUSE
MODIFY FOR UHC ENTRY ACCESS

DOCUMENT 00-91-13
ADDENDUM #1
FIELD HOUSE
MODIFY FOR UHC ENTRY ACCESS
UI #0259101

BID DATE: SEPTEMBER 13, 2012, 2:00 P.M. CENTRAL TIME

The information contained in this Addendum modifies, supplements or replaces information contained in the Project Manual and on the Drawings and is hereby made a part of the Contract Documents.
Acknowledge receipt of this Addendum by placing the appropriate addendum number in the blank on the Bid Form.

ADDENDUM INDEX

APPLICABLE TO THE PROJECT MANUAL: Item #1 through Item #20 inclusive.

APPLICABLE TO THE DRAWINGS: Item #21 through Item #29 inclusive.

ATTACHMENT(S): List of Plan Holders
Supplemental Drawings C 01, A 01

APPLICABLE TO THE PROJECT MANUAL:

UI #0259101

SECTION #00 45 14 - TELECOMMUNICATION QUALIFICATION REQUIREMENTS

A. ADD the following as approved telecommunication subcontractors for this project: "Tri-City Electric Company, 6225 North Brady Street, Ovensport, IA 52066, 565.322.7741; and Communications Engineering Company, 405 Boyson Road, Hawkathia, IA 52233, 319-731-1200"

ADDENDA

APPLICABLE TO THE DRAWINGS:

ITEM #21 SHEET #C4.02 – UTILITY PROFILES

A. **ADD** tracer wire and tracer wire terminal box to the profile, and several detail references to the call-out notes. Refer to attached Supplemental Drawing C-D1.

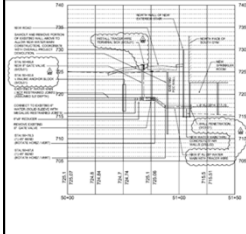
ITEM #22 SHEET #C5.01 – SITE UTILITY DETAILS

A. **REVISE** the "steel plate" notes on the Typical Section of Detail 7 (Open-Throat Curb Intake Under Pavement) to read: "Steel plate by Bid Package #2 contractor as needed to accommodate staged construction."

B. **DELETE** the "Base by Bid Package #1 contractor" note on the Typical Section of Detail 7 (Open-Throat Curb Intake Under Pavement).

C. **ADD** text (boxed, below) to the new water main assembly call-out of Detail 5 (IN-LINE ANCHOR BLOCK – SECTION) to read as follows:


"New RJ DIP water main with mechanical joint fittings, valve, and cap (use EBAA Iron Megatug Series 1100)"




1 PROFILE VIEW: WATER MAIN	
SHIVEHATTERY ENGINEERS ARCHITECTS INC. 1000 WEST 10TH AVENUE SUITE 100 DENVER, CO 80202	
DATE: 08/23/19	SCALE: AS SHOWN
DRAWN BY: J. BROWN	CHECKED BY: M. GARDNER
PROJECT: [REDACTED]	CLIENT: [REDACTED]
NO. 1	CGI

SUPPLEMENTAL INSTRUCTIONS

ISSUED AFTER CONTRACT HAS BEEN AWARDED TO A GENERAL CONTRACTOR...



SUPPLEMENTAL INSTRUCTIONS



- ▶ ALSO KNOWN AS "ITC" OR "ASI" OR "ESI"
 - ▶ INSTRUCTIONS TO CONTRACTOR
 - ▶ ARCHITECT'S SUPPLEMENTAL INSTRUCTION
 - ▶ ENGINEER'S SUPPLEMENTAL INSTRUCTION
- ▶ ISSUED THROUGHOUT CONSTRUCTION PHASE
- ▶ MEANT TO:
 - ▶ PROVIDE CLARIFICATIONS
 - ▶ CHANGE CONTRACT REQUIREMENTS









ACTIVITY QUESTIONS

- ▶ **BOYD LAW / ECKSTEIN MEDICAL RESEARCH / CURRIER RESIDENCE**
 - ▶ WHAT DOES THE SCOPE OF THE PROJECT COVER?
 - ▶ WHAT TYPE OF FLOORING IS GOING BACK IN?
 - ▶ DOES THE PROJECT INCLUDE ANY
 - ▶ BID ALLOWANCES?
 - ▶ BID ALTERNATES?
 - ▶ UNIT PRICES?
 - ▶ WERE PLANS CHANGED BY ADDENDA?
 - ▶ WHAT IS THE PROJECT DURATION?
 - ▶ WHAT SPECIALTY ITEMS ARE INCLUDED IN THE PROJECT?
 - ▶ IS LIGHTING BEING REPLACED?
 - ▶ IS HVAC BEING UPGRADED?
 - ▶ ARE DOOR AND DOOR FRAMES BEING REPLACED ALONG WITH ACCESS SECURITY UPGRADES?

This concludes The American
Institute of Architects Continuing
Education Systems Course

AIA
Continuing
Education
Provider

Thank you...



▶ SADIE GREINER, PE, LEED AP
▶ DESIGN & CONSTRUCTION
▶ UNIVERSITY OF IOWA
