

The (AASHE) STARS Framework and Facilities – Better Together

Carol Dollard – Energy Engineer | Stacey Baumgart – Campus Energy Coordinator
Champions for STARS at Colorado State University



Credit(s) earned on completion of this course will be reported to American Institute of Architects (AIA) Continuing Education Session (CES) for AIA members.

Certificates of Completion for both AIA members and non-AIA members are available upon request.

This course is registered with AIA CES for continuing professional education. As such, it does not include content that may be deemed or construed to be an approval or endorsement by the AIA of any material or construction or any method or manner of handling, using, distributing, or dealing in any material or product.

Questions related to specific materials, methods, and services will be addressed at the conclusion of this presentation.



Course Description

Everyone wants good metrics to benchmark progress. Yet most of us prefer doing projects instead of measuring and reporting. How do we strike the right balance? Many of the STARS data fields are parameters already tracked by FM; but the sustainability office may use different words/criteria when requesting that data. How can the STARS framework enhance our FM reporting and KPIs? Why should a STARS report matter to our FM group? And, what is STARS anyway?

STARS is the Sustainability Tracking, Assessment & Rating System administered by AASHE (Association for the Advancement of Sustainability in Higher Education), and used by over 900 institutions. STARS is a comprehensive metric covering all aspects of sustainability including Academics, Engagement, Administration, Planning, and Operations. As facilities staff we will likely be asked to provide the data associated with the Operations section.



Learning Objectives

1. Basic understanding of the STARS rating system and the interrelated metrics used in FM
2. How STARS metrics can be used for KPIs for FM
3. How to utilize STARS to raise awareness and advance best practices for FM initiatives
4. How to align with sustainability staff on your campus to help advance initiatives important to both offices
5. Why sustainability benchmarking matters to your campus



What is STARS?

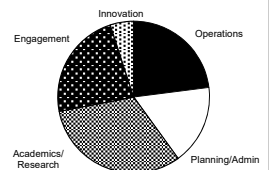
The Sustainability Tracking, Assessment & Rating System is a comprehensive, self-reporting framework for colleges and universities to measure their sustainability performance.

- Administered by Association for the Advancement of Sustainability in Higher Education
- Nearly 400 institutions active
- Princeton Review & Sierra Club utilize STARS data for their ranking systems



STARS categories:

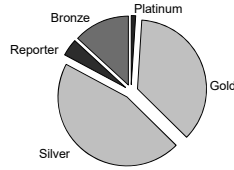
- Academics & Research
- Operations
- Planning & Administration
- Engagement
- Innovation



STARS is a comprehensive assessment:
63 credit areas requiring over 1,000 responses

Results of 362 institutions:

- Platinum (1%)
- Gold (36%)
- Silver (45%)
- Bronze (13%)
- Reporter (4%)



Your sustainability people need you!

Where is your sustainability office located?

- Facilities
- Housing
- President's Office

Where do you imagine the intersections with Facilities?

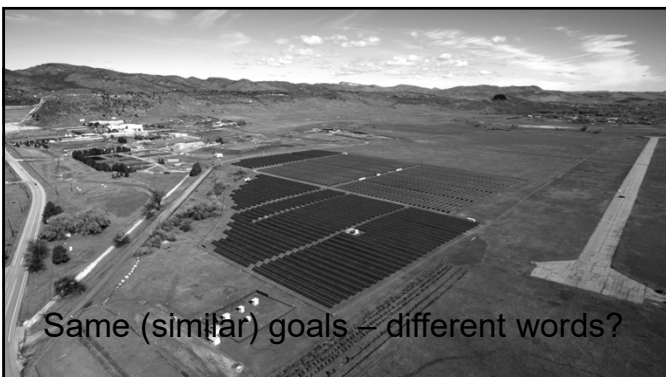


Operations data needed for STARS

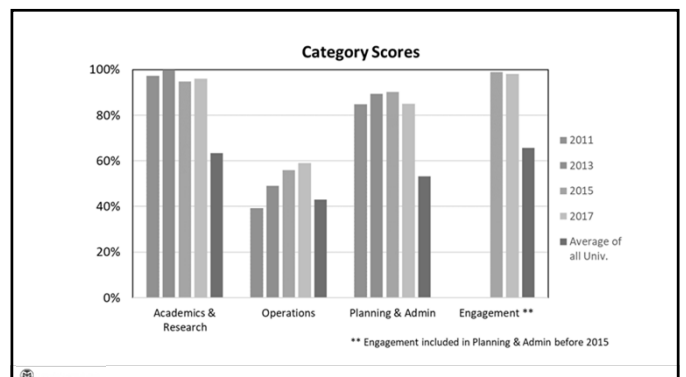
- | | |
|---------------------|-------------------|
| • Energy Use | • Water Use |
| • GHG Inventory | • Space / Acreage |
| • Green Procurement | • Fleet |
| • Commuter Data | • LEED Buildings |
| • Waste | • Policies |



Aren't we done benchmarking yet?



Same (similar) goals – different words?





Why sustainability benchmarking matters to your University...

Success brings more success!



How can the sustainability folks help Facilities Management?

This concludes The American Institute of Architects Continuing Education Systems Course



Discussion?

Carol Dollard
Carol.Dollard@colostate.edu
 Stacey Baumgarn
Stacey.Baumgarn@colostate.edu



Thank you

