

**Maintaining, Renovating,
Restoring and Preserving
Historical Properties**

MARK STANIS
DIRECTOR – CAPITAL CONSTRUCTION AND RENOVATIONS
UVA FACILITIES MANAGEMENT
MSTANIS@VIRGINIA.EDU

 Facilities Management



1

IN THIS SECTION WE WILL COVER

- Various definitions of "historic"
- Difference between renovation, restoration, preservation and maintenance
- Examples and Current historic work on the Lawn
- Limes vs Cements
- What other items would you like to cover?




2

**VARIOUS DEFINITIONS OF
"HISTORIC"**


DEFINITION OF HISTORIC PROPERTY
FROM SECRETARY OF THE
INTERIOR STANDARDS

A district, site, building, structure or object significant
in American history, architecture, engineering,
archeology or culture at the national, State, or local
level.



3

UVA's "Historic" Structures




4

Evaluation Methodology

One goal of the Historic Preservation Master Plan was to develop a ranking of historic structures and landscapes which lists them with respect to their importance to the University's historic development and character.

To establish the list, an approach was developed which allowed all of the resources to be judged in a consistent manner.

This required understanding how the building or landscape fit within the history of the University and included an interior and exterior survey of each building or landscape and an evaluation of the buildings or site's integrity.



5

Ranking

Based on the information gathered, each building and landscape was assessed and assigned a preservation priority – a ranking identifying the resources level of importance in terms of the University's historic character. The priorities are divided into six groups:

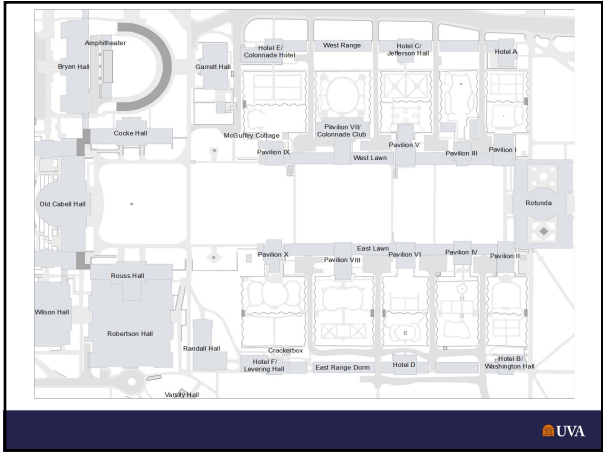
- Fundamental to University history and present character, which applies exclusively to the Jefferson building and Grounds.
- Essential to University history and present character.
- Important to University history and present character.
- Contributing to University history and present character.
- Not Contributing to University history and present character.
- Significant outside the University context.



6



1 0



1 1



1 2



1 3



1 4



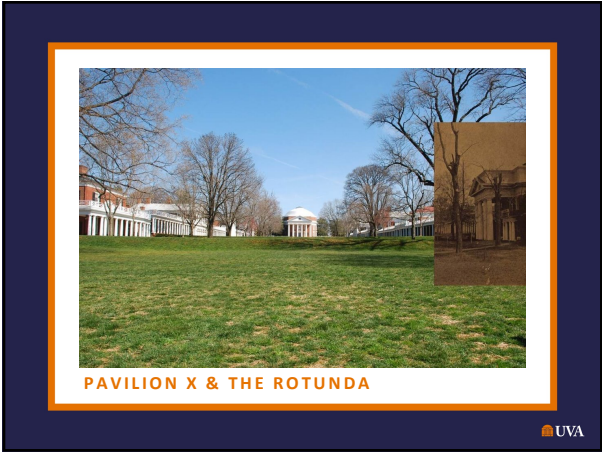
1 5



1 6



1 7



1 8



19



20



21



2 2



2 3



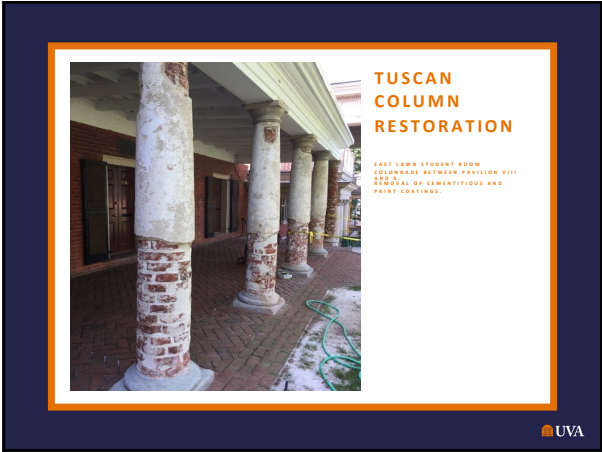
2 4



2 5



2 6



2 7

TUSCAN COLUMN RESTORATION

EAST LAWN STUDENT ROOM COLONNADE BETWEEN PAVILION VIII AND X. REMOVAL OF CEMENTITIOUS AND PAINT COATINGS.

UVA

28

TUSCAN COLUMN RESTORATION

EAST LAWN STUDENT ROOM COLONNADE BETWEEN PAVILION VIII AND X. REMOVAL OF CEMENTITIOUS AND PAINT COATINGS.

UVA

29

TUSCAN COLUMN RENOVATION

ORIGINAL WOOD - MOLDED BRICK

UVA

30



3 1



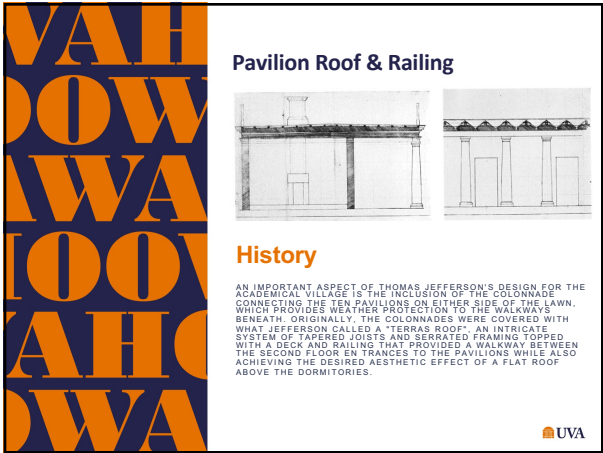
3 2



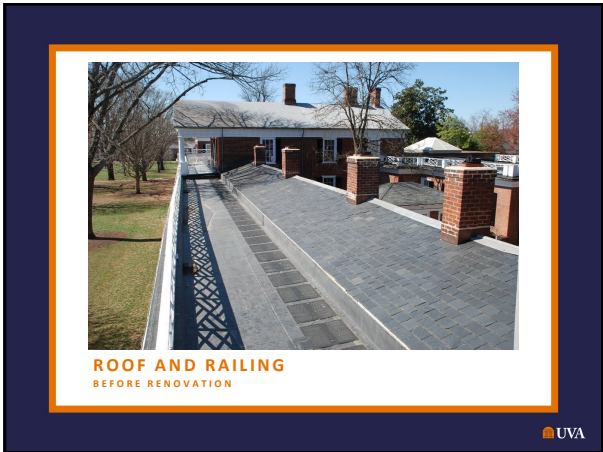
3 3



3 4



3 5



3 6



37



38



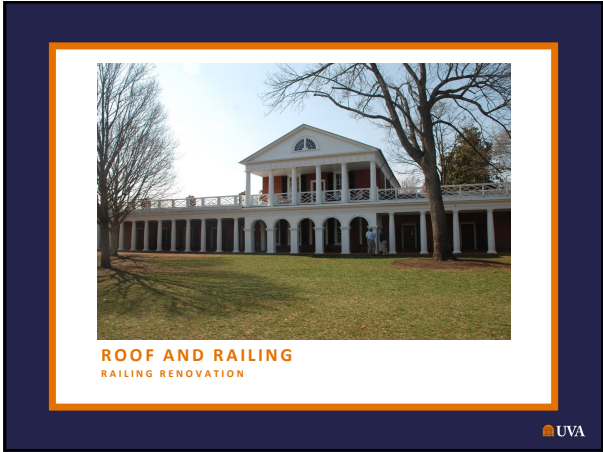
39



4 0



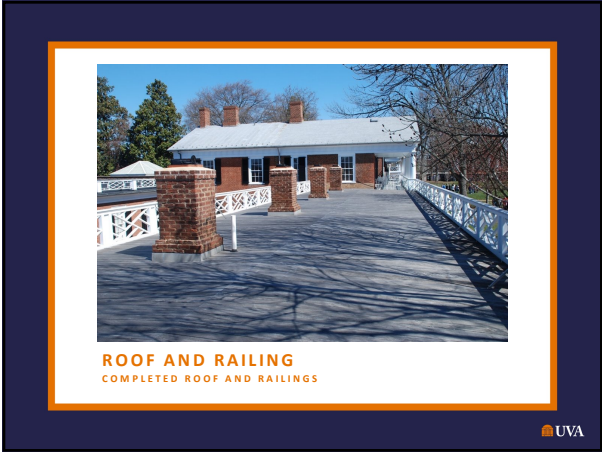
4 1



4 2



4 3



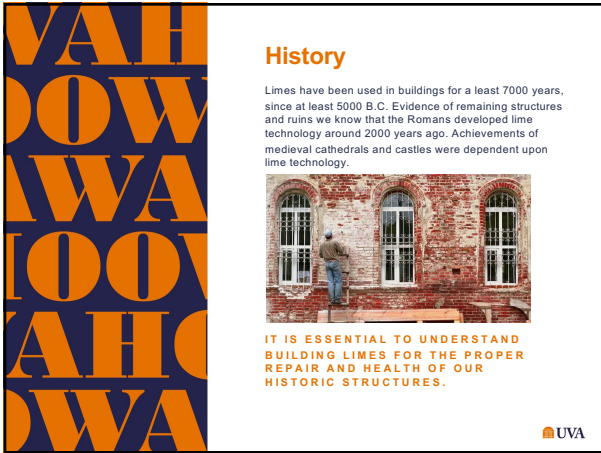
4 4



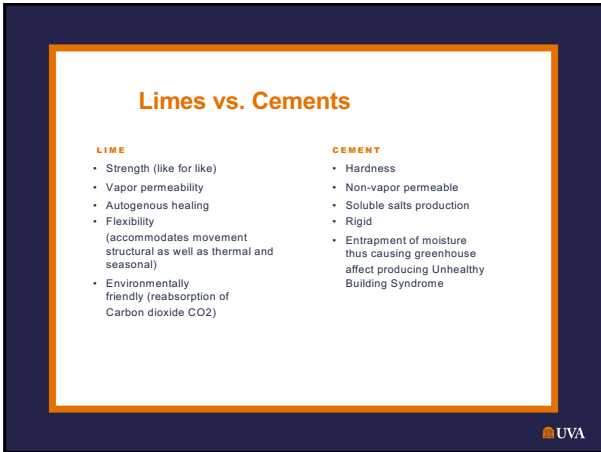
4 5



4 6



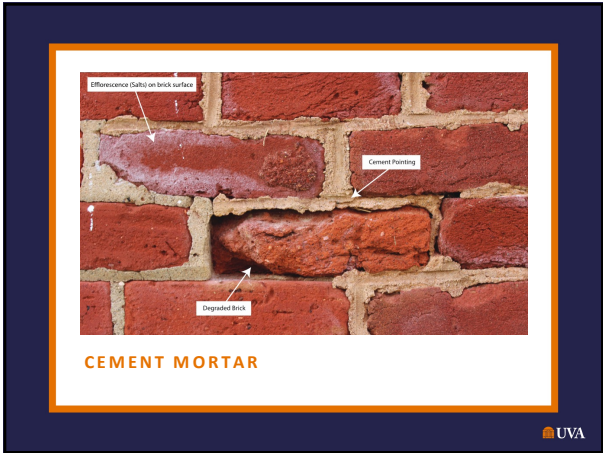
4 7



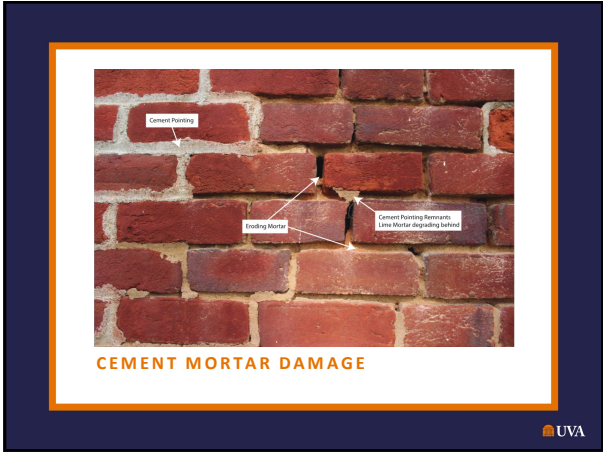
4 8



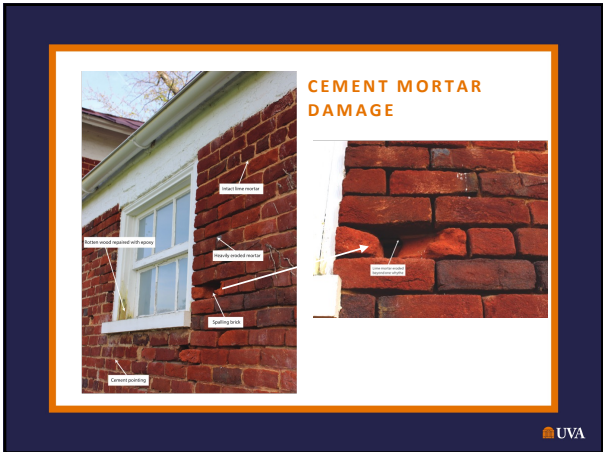
49



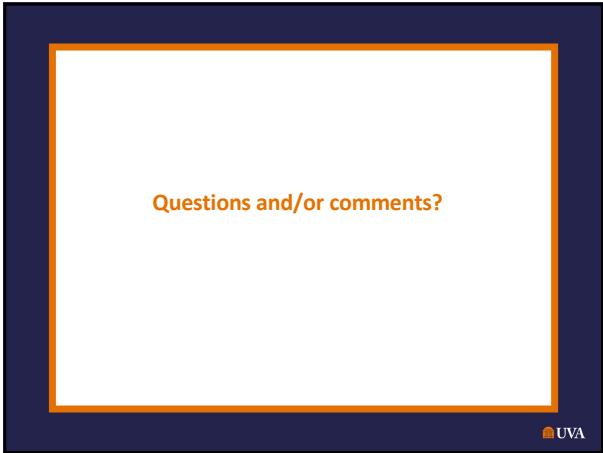
50



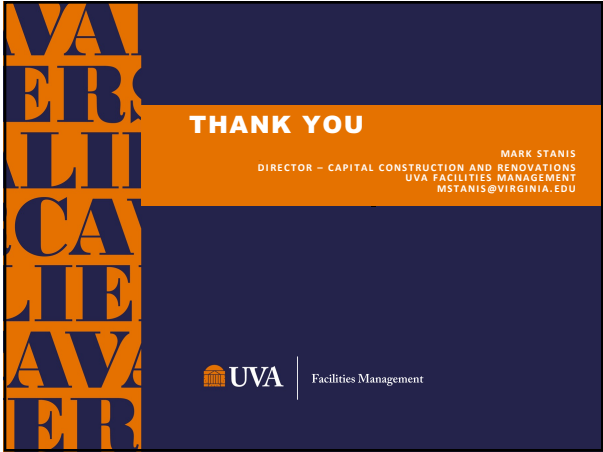
51



5 2



5 3



5 4
